

# Angel City CHORALE

BUILDING COMMUNITY ONE SONG AT A TIME

Announcing our new CD and concerts

# The Road Home

Sue Fink  
Artistic Director

June 7, 2008  
Saturday - 7:30 P.M.

June 8, 2008  
Sunday - 7:00 P.M.

Wilshire United Methodist Church  
4350 Wilshire Blvd., L.A. 90010

Tickets: Advance / At Door  
Adults: \$25 / \$30  
Seniors (over 60): \$22 / \$25  
Children (5-12): \$17 / \$20

A portion of the proceeds  
from our new CD will  
benefit

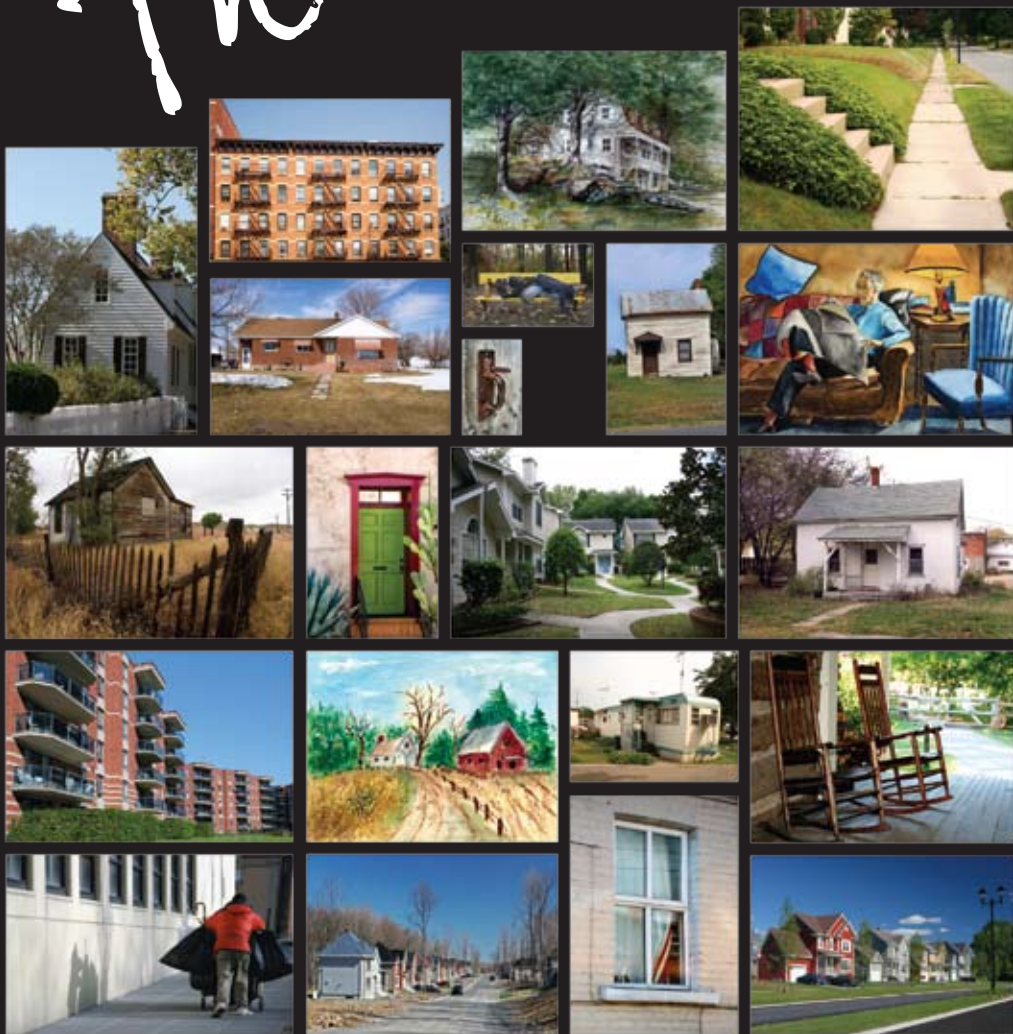


*The Road Home* Unplugged  
...an encore performance on

June 15, 2008  
Sunday - 3:00 P.M.

Limited Seating. All Tickets \$30.  
Buy Online! At door only if available.

Brentwood Presbyterian Church  
12000 San Vicente Blvd., L.A. 90049



To Purchase Tickets:

Call 310-943-9231 or visit our website

[www.angelcitychorale.com](http://www.angelcitychorale.com)

Special CD/Concert Ticket package available online